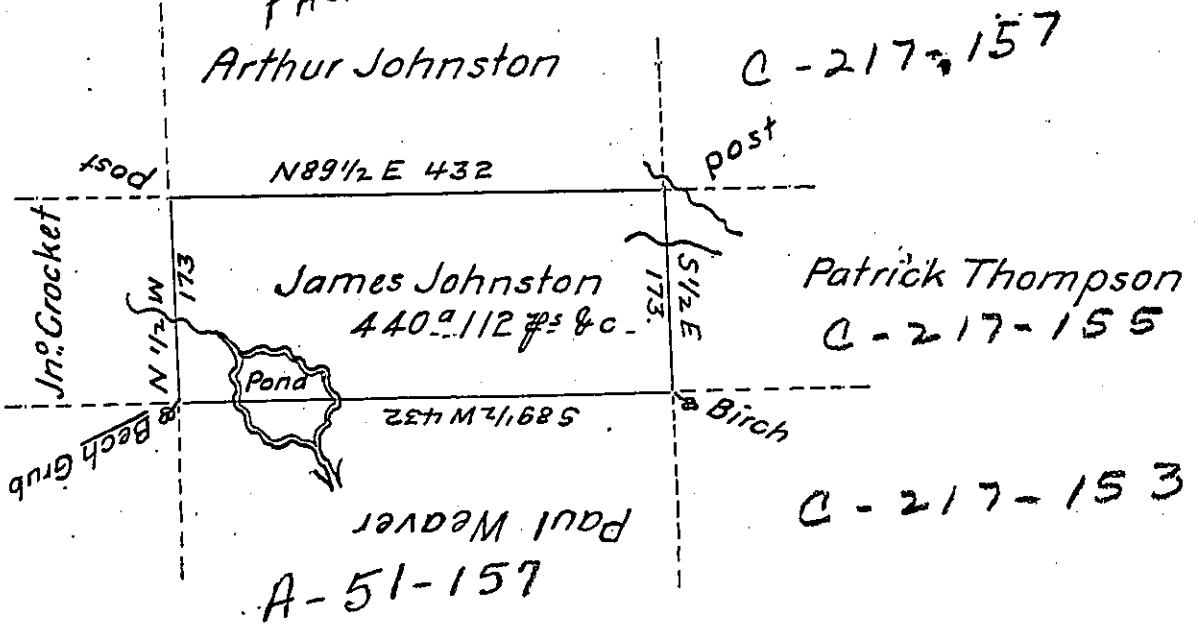


PAGE - 285



A Draught of a tract of land called \_\_\_\_\_ Situate in the  
 County of Luzerne, adjoining Paul Weaver & others surveyed the  
 26<sup>th</sup> day of Sept<sup>r</sup>. 1792 for James Johnston in pursuance of a warrant  
 bearing date the 3<sup>d</sup> day of April 1792 Containing Four hundred Forty  
 Acres & one hundred & twelve perch<sup>s</sup>. & the allowance of Six <sup>per</sup> Cent &c.

To

Dan<sup>l</sup>. Brodhead Esq<sup>r</sup>.  
 Surveyor General.

Anty Grothers D.S.

IN TESTIMONY that the above is a copy of the original remaining on file in  
 the Department of Internal Affairs of Pennsylvania, made  
 conformably to an Act of Assembly approved the 16th day of  
 February, 1833, I have hereunto set my Hand and caused  
 the Seal of said Department to be affixed at Harrisburg,  
 this third day of April 1905.

*James B. Brown*  
 Secretary of Internal Affairs.